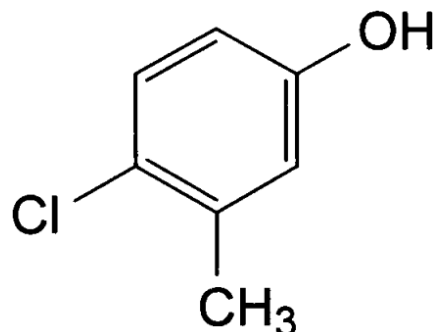


PRODUCT Chlorocresol Ph. Eur.

CAS no. 59-50-7

 C_7H_7ClO 

SYNONYMS p-Chloro-m-Cresol; para chloro meta cresol;

CHARACTERISTICS A white crystalline powder or colourless or almost colourless crystals, slightly soluble in water, very soluble in alcohol, freely soluble in ether and in fatty oils. It dissolves in solutions of alkali hydroxides.

TEST	SPECIFICATION	
Content (Assay)	98.0% - 101.0%	
Identification	Conforms to Ph. Eur. tests	
Melting Point	64 ⁰ – 67 ⁰ C	
Appearance of Solution	The solution is clear and not more intensely coloured than reference solution BY ₆	
Acidity	Not more than 0.2ml of 0.01M NaOH is required to produce a pure yellow colour	
Related Substances	Any single impurity	Maximum 0.1%
	Total impurities	Maximum 1.0%
Non-volatile matter	Not more than 0.1%	

ENQUIRY